

SHURE®

THE SOUND OF THE PROFESSIONALS...WORLDWIDE

PROFESSIONAL ENTERTAINER

MODEL PE85L-SP UNIDIRECTIONAL DYNAMIC MICROPHONE



PE85L-SP: Supplied with C25B Cable,
A95 Line Matching Transformer and
A55M Cushioned Swivel Adapter

Take an acoustic design that approaches the theoretical ideal and couple it with a very effective pop and wind filter in the ball-type grille. Then add a brand new cushioned swivel adapter that eliminates mechanical noise. Finally supply a low-to-high impedance matching transformer and you have a complete microphone system that is the professional's choice for every occasion and every application. The PE85 has it all!

- Unusually effective and uniform unidirectional [cardioid] pickup pattern minimizes feedback in live performance
- Very wide frequency response, ideally shaped for both voice and instruments
- Ball-type pop-filter grille reduces "p-popping" and breath noise
- Very effective internal shock mount minimizes handling noise
- Cushioned shock-mount swivel adapter prevents transmission of microphone stand noise
- High-output low-impedance cartridge
- Low-to-High impedance matching transformer supplied to permit instant attachment to any microphone input without sacrificing cable length
- Silent, magnetic-reed On-Off switch with lockplate
- Nonreflective dark gray finish for professional appearance onstage
- Extremely rugged and reliable
- Backed by the Shure guarantee

SPECIFICATIONS

Type

Dynamic

Frequency Response

50 to 15,000 Hz [see Figure 1]

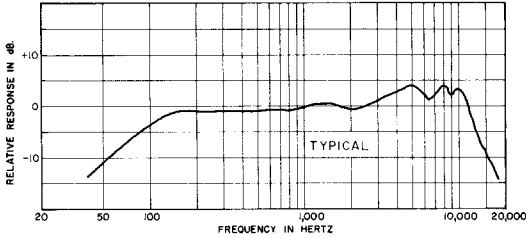


FIGURE 1

Polar Pattern

Cardioid [unidirectional]

Impedance

Microphone: Low [150 ohms rating]

A95 Line Matching Transformer: High [greater than 30 kilohms]

Output Level [at 1,000 Hz]

	MICROPHONE	A95
Open Circuit Voltage*	-77.5 dB	-56.0 dB
*0 dB = 1V/ μ bar	[0.13 mV]	[1.6 mV]
Power Level**	-57.5 dB	
**0 dB = 1 mW/10 μ bar		

Phasing

Positive pressure on diaphragm produces positive voltage on pin 2 of audio connectors and on sleeve of phone plug

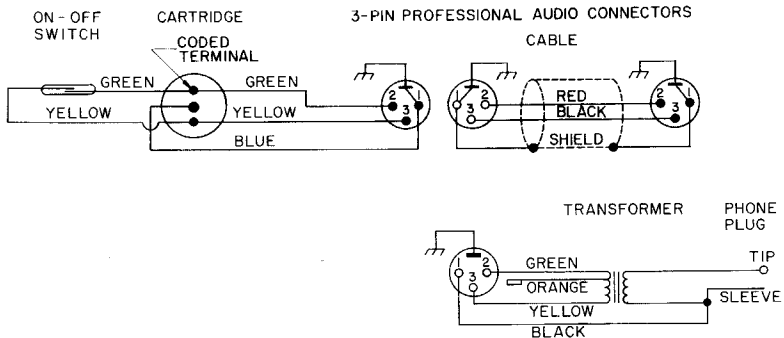


FIGURE 2

Switch

Built-in magnetic-reed On-Off switch with lockplate. To lock switch On, remove screw and turn lockplate 180°. Reassemble and tighten screw.

Cartridge Shock Mount

Internal rubber vibration isolator

Case

Dark gray with dark gray spherical screen

Cable

7.6m [25 ft] 2-conductor shielded with 3-socket and 3-pin professional audio connectors

Net Weight [less cable]

298 grams [10½ oz]

Line Matching Transformer

Provides instant conversion of low-impedance microphone line to high impedance; 3-socket professional audio connector on low-impedance end and ¼-inch phone plug on high-impedance end.

Swivel Adapter

Noiseless, cushioned design, positive action, adjustable from vertical to horizontal, for mounting ⅝"-27 thread

FURNISHED ACCESSORIES

Line Matching Transformer	A95 Series
Swivel Adapter	A25B
Cushioned Swivel Adapter	A55M
Padded Gig Bag	26A07

OPTIONAL ACCESSORIES

Windscreen	A61 WS Series
Floor Stand [Weighted base]	MS-10C
Floor Stand [Tripod base]	S15
Baby Boom	BB-44

REPLACEMENT PARTS

Cartridge	R120
Switch	90D1725
Cable	C25B
Screen and Grille	RK225G

SHURE—QUALITY IS OUR FIRST CONSIDERATION

Congratulations on the purchase of your new Shure microphone! It will serve you faithfully even in the most difficult circumstances. Because more than 50 years of experience with microphones has taught us one thing: they are not always used under ideal conditions. Far from it! So Shure develops, designs, builds, and tests them for the worst conditions we can imagine.

We know they'll be flung into equipment boxes after performances. We know they'll be called upon to function at humidity levels near 100%. We know they'll be left in the direct rays of the midday sun for hours, waiting for outdoor concerts to begin. Professional vocalists depend upon their microphones much as musicians depend upon their instruments, but many don't hesitate to throw their Shure microphones across the stage and down on the floor—violently—as part of their performance. They never give it a second thought. They know that Shure microphones shrug off abuse that would make others fail.

Shure reliability begins during the design stage. Shure has a staff of specialists whose sole function is to uncover any weaknesses before Shure microphones are put into quantity production. During the testing process, microphones are:

Heated at temperatures up to 85°C [185°F] often for entire days

Frozen down to -46°C [-50°F] for half-hour periods **during** the heat test

Shaken from side to side, back and forth, and up and down, simultaneously and violently

Subjected to steamy humidities—up to 100% at room temperature and 93% at 38°C [100°F]

Subjected to ultraviolet rays, salt sprays, alcohol, sand, and water

And for good measure, dropped repeatedly 2 meters [6 ft] onto hardwood floors.

That is our **standard** test procedure. All during production, units chosen at random are put through these same tests. Failure of any one microphone brings production to a halt until the original design requirements are again met.

That's why at Shure we say, quality is our first consideration. The purchasers of the millions of microphones bearing the name Shure during past years, and those now buying their first Shure microphone can rely on us to continue to follow the philosophy and policies that keep Shure microphones working dependably—year after year after year.

Quality is our first consideration!

BASIC MICROPHONE TECHNIQUE

Good microphone technique will add to your effectiveness as a performer. Keep the following points in mind when using your Shure Professional Entertainer Microphone.

1. Maintain the proper distance from the microphone. When you want a warm, full sound, get close to the microphone and lower your voice. For a wide open, driving sound, raise your voice and back away from the microphone to avoid overdriving the amplifier into distortion.
2. Don't change your distance from the microphone needlessly as this will affect the level of sound coming from the loudspeakers.
3. Your Shure PE Microphone is your link to the audience. Consider the microphone an instrument and develop your technique through practice.

FEEDBACK AND UNIDIRECTIONAL MICROPHONES

A performer's worst enemy in using a microphone is "feedback". This is a harsh hum, howl, or squeal that occurs when the microphone picks up sound from the loudspeakers, reamplifies and rebroadcasts it over and over again. This vicious circle results in feedback.

A unidirectional microphone aids in preventing feedback because it rejects sound that originates from the sides and rear. Sound pickup from the sides is reduced by about one half, and pickup from the rear is reduced by about nine tenths. You can demonstrate this reduction in pickup by repeating "Test one, two" or some other convenient phrase as you rotate the microphone from front to back.

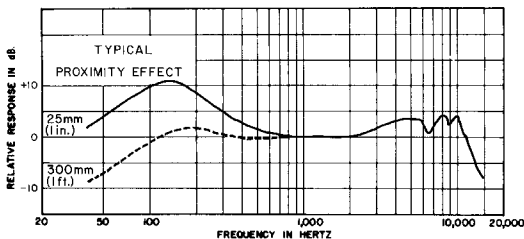
Using unidirectional microphones close to the performer or instrument ensures that the direct sound will be much louder than the feedback-producing amplified sound. Because the amplifier gain can be turned up less to achieve the desired overall loudness, the amplified sound will likely remain below the volume that triggers feedback.

Other helps in preventing feedback are: keep the loudspeakers as far to the sides as possible; be sure that the microphones point toward the performers and away from the loudspeakers; and make certain that any stage monitor speakers are positioned in front of the performers and face the insensitive rear of the microphone.

UNIDIRECTIONAL MICROPHONES, OMNIDIRECTIONAL MICROPHONES, AND PROXIMITY EFFECT

Because of their usefulness in reducing the likelihood of feedback, unidirectional microphones are best in sound reinforcement and public address; while omnidirectional microphones are best in recording where feedback problems do not arise, or for close-miking instruments and amplifiers.

When unidirectional microphones are used close to a vocalist or musical instrument, there is an increase in bass [low-frequency] output called proximity effect. At a distance of about 25 mm [1 in.] a typical increase is shown on the curve below.



Proximity effect can be used to improve your sound.

1. With vocalists, it increases warmth, giving a fuller quality to the voice.
2. With instruments, it provides a flat or boosted bass output without tone controls, simply by changing the distance between source and microphone; and close miking provides natural isolation by minimizing bass pickup of other instruments.

Most Shure unidirectional microphones are designed with a bass response that provides control at low frequencies yet still allows proximity effect to be used advantageously when desired. To employ proximity effect, you need to hear the amplified result. Just as you practice your instrument, you will want to practice your microphone technique to get the precise sound you want. [A good way to hear the actual result of proximity effect is to use monitor speakers or headphones if they are available.]

Omnidirectional microphones do not exhibit proximity effect when used closeup. Because the response does not change with angle or distance from the performer, an omnidirectional microphone is valuable when the sound must stay the same for several performers positioned around the microphone, or for a performer who moves from place to place during a play or interview. But be aware of feedback problems that may occur if omnidirectional microphones are used when sound amplification is present.

CHOOSING A MICROPHONE EXTENSION CABLE

Low-impedance microphones can be used with practically unlimited lengths of cable with no added noise or high-frequency loss. Any Shure 2-conductor balanced cables (e.g., C25B, C25E, C25F, C50F, C100F, or C20H) can be used as extension cables for Shure low-impedance microphones. These cables can also be used in any required lengths or combinations between a low-impedance microphone and the C25G Low-to-High-Impedance Cable-Transformer or between the microphone and an A95UF Matching Transformer.

High-impedance microphone cables are usually limited to 6.1m [20 ft] to avoid high-frequency loss or possible noise pickup. If longer cables are needed with high-impedance microphones, use such Shure cables as the C25B, C25E, C25F or C20H to reach the required distance. Then add the C20A to plug into the equipment. Adjust the treble control on the equipment to compensate for the high-frequency rolloff caused by the extra length of cable.

Look for the Shure **Audio Connection™** for quality microphone cables.

GUARANTEE

This Shure product is guaranteed in normal use to be free from electrical and mechanical defects for a period of one year from date of purchase. Please retain proof of purchase date. This guarantee includes all parts and labor. This guarantee is in lieu of any and all other guarantees or warranties, express or implied, and there shall be no recovery for any consequential or incidental damages.

SHIPPING INSTRUCTIONS

Carefully repack the unit, have it insured, and return it prepaid to:

Shure Brothers Incorporated
Attention: Service Department
222 Hartrey Avenue
Evanston, Illinois 60204

If outside the United States, return the unit to your dealer or Authorized Shure Service Center for repair. The unit will be returned to you prepaid.

SHURE

**PLACE
STAMP
HERE**

POST CARD

**Shure Brothers Inc.
Post Office Box 1582
Evanston, Illinois 60204
U.S.A.**



PROFESSIONAL ENTERTAINER

MICROPHONE PURCHASE REGISTRATION

MODEL	PURCHASE DATE	PURCHASED FROM
WE WANT AND APPRECIATE YOUR COMMENTS.		NAME:
		CITY:

COMMENTS AND SUGGESTIONS: _____

What will this microphone be used for? SOUND REINFORCEMENT (PA) RECORDING

VOCALS ACOUSTIC PIANO ACOUSTIC GUITAR HORNS OTHER _____

DRUMS ELECTRIC KEYBOARD ELECTRIC GUITAR HARMONICA _____

NAME _____

ADDRESS _____

CITY _____ STATE _____

ZIP CODE _____ COUNTRY _____

PHONE (____) _____

WHAT INFLUENCED YOUR DECISION TO BUY A SHURE?

PERSONAL EXPERIENCE CATALOG FRIEND

REPUTATION SALESPERSON ADVERTISEMENT

PRODUCT REVIEW OTHER _____

PLEASE SEND CATALOG