

**SHURE**

222 HARTREY AVE., EVANSTON, ILL. 60204 U.S.A.

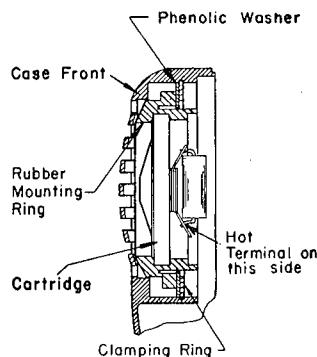
MICROPHONES AND ELECTRONIC COMPONENTS

AREA CODE 312/328-9000 • CABLE: SHUREMICRO

**DATA SHEET****MODEL R10**

## Installation and Connection Instructions for Model R10 Carbon Microphone Replacement Cartridge

*Change m/c, May 53/15*



### Special Information On The MODEL R10

#### Carbon Microphone Cartridge For Replacement Purposes

#### Replacement List:

The Model R10 is the direct replacement for the cartridge used in the Models 101A, 101B, 101C, 101E, 102A, 102B, 102C, 102E, 103, 104A, 104B, 120, CB4A, CB4B, CB10, CB10B, CB10C, CB10E, CB11, CB11B, CB12, CB12A, CB12B, CB12C, CB12D, CB12E, CB14, CB14A, CB15, CB15B, CB15C, CB15D, CB15F, CB162, 91A27 carbon microphones. It is an improved replacement for the discontinued model 99-701 carbon microphone cartridge.

Model R10 carbon cartridge is used as a replacement in the "CB", "100", "104", and "120" series carbon microphones. (See "Replacement List" under Special Information.)

The above illustration shows the cartridge as installed in the "CB" (except CB20, CB4 series and 104 series) and "100" series microphones. In this installation, assemble so that capacitor is at side of case away from switch to prevent shorting to switch blades. Included with the cartridge are one rubber mounting ring, one phenolic washer, and one metal clamping ring. Care should be taken to assemble the parts as shown. The clamping ring must be securely positioned in slot provided in the microphone case front. The phenolic ring and the metal clamping ring are not needed if the replacement cartridge is installed into the Model 120 series microphones. None of the additional parts are needed if the cartridge is installed into the 104 series, CB4 series and CB20. The "hot" terminal indicated on the above diagram is insulated from the cartridge case by a fiber spacer. The "ground" terminal is riveted directly to the cartridge case. Connections to the cartridge are made by soldering directly to the terminal lugs.

**Guarantee:** This Shure product is guaranteed in normal use to be free from electrical and mechanical defects for a period of one year from the date of purchase. Please retain proof of purchase date. This guarantee includes all parts and labor.

#### High Output Voltage:

5.0 dB below 1 volt per 100 microbar speech signal when installed in microphone case.

#### Good Response:

Clear, crisp response — designed for high intelligibility of speech.

#### Ruggedness:

Built to withstand rough treatment and extremes in temperature and humidity.

Model R10 is designed to operate into a load impedance of 50 to 100 ohms with currents up to 50 milliamperes through the cartridge.

Note: All connections must be soldered using a good grade of rosin core solder. *Under no circumstances* should solders or soldering fluxes of organic, chloride, or "acid" type be used for electrical connections.

**Shipping Instructions:** Carefully repack the unit and return it prepaid to the factory. If outside the United States, return the unit to your dealer or Authorized Shure Service Center for repair. The unit will be returned to you prepaid.