



UL4

UniPlex Lavalier Microphone

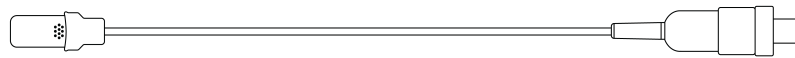
Web guide for UniPlex UL4.
Version: 1.1 (2022-J)

Table of Contents

UL4 UniPlex Lavalier Microphone	3	Optional Accessories	4
		Replacement Parts	5
General Description	3	Specifications	5
Features	3	Frequency Response	7
Lavalier Distance	3	Polar Pattern	8
Tie Clip	3	Wiring and Termination	8
Snap-Fit Windscreen	4	Typical Wiring Table	8
		MTQG Connector Assembly	9
Accessories	4	Certifications	9
Furnished Accessories	4		

UL4 UniPlex Lavalier Microphone

General Description



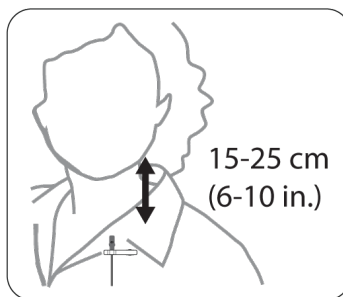
The Shure UniPlex UL4 is a professional subminiature cardioid lavalier microphone that is ideal for speech applications in broadcast, corporate, and conference environments. The subminiature design and custom cardioid element provide robust audio performance. Each microphone is supplied with a storage pouch, single tie clip, and snap-fit windscreen.

Features

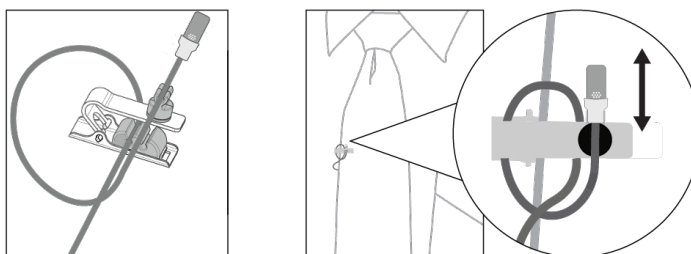
- 5 mm cardioid subminiature design for discrete placement
- 1.6 mm PLEX Cable technology, paintable cable, and no memory effect
- Professional sound quality for speech applications
- High RF immunity, compatible with Shure digital wireless systems without RF interference
- Included case, tie clip, and windscreen
- TA4F and LEMO terminations for variable wireless system connectivity
- Available in Black, Tan, Cocoa, and White finishes

Note: Only use UL4 with Shure wireless systems

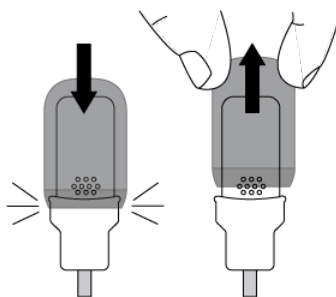
Lavalier Distance



Tie Clip



Snap-Fit Windscreen



Accessories

Furnished Accessories

Furnished Accessories	UL4 Black	UL4 Tan	UL4 Cocoa	UL4 White
Single Tie Clip	RPMDL4STC/B (1)	RPMDL4STC/T (1)	RPMDL4STC/C (1)	RPMDL4STC/W (1)
Snap-Fit Windscreen	RPMUL4SFWS/B (1)	RPMUL4SFWS/T (1)	RPMUL4SFWS/C (1)	RPMUL4SFWS/W (1)
Case	RPMDL4CASE	RPMDL4CASE	RPMDL4CASE	RPMDL4CASE
Preamplifier (UL4B/ C-XLR only)	RPM400TQG	N/A	N/A	N/A

Accessories are available in Black (B), Tan (T), Cocoa (C), and White (W) color varieties. Please consult your Shure representative for available options.

Optional Accessories

TA4F/TQG XLR Preamplifier	RPM400TQG
---------------------------	-----------

Lemo XLR Preamplifier	RPM400LEMO
Black Dual Tie Clip, qty.1	RPMDL4DTC/B
White Dual Tie Clip, qty.1	RPMDL4DTC/W
Tan Dual Tie Clip, qty.1	RPMDL4DTC/T
Cocoa Dual Tie Clip, qty.1	RPMDL4DTC/C

Replacement Parts

RPMUL4SFWS/B	UL4 SNAP-FIT WINDSCREEN, BLACK, QTY 3
RPMUL4SFWS/C	UL4 SNAP-FIT WINDSCREEN, COCOA, QTY 3
RPMUL4SFWS/T	UL4 SNAP-FIT WINDSCREEN, TAN, QTY 3
RPMUL4SFWS/W	UL4 SNAP-FIT WINDSCREEN, WHITE, QTY 3
RPMDL4STC/B*	SINGLE TIE CLIP, BLACK, QTY. 3
RPMDL4STC/C*	SINGLE TIE CLIP, COCOA, QTY. 3
RPMDL4STC/T*	SINGLE TIE CLIP, TAN, QTY. 3
RPMDL4STC/W*	SINGLE TIE CLIP, WHITE, QTY. 3
RPMDL4CASE*E	DL4 POUCH, LAVALIER

*Also compatible with DuraPlex and TwinPlex 1.6 mm microphones.

Specifications

Microphone Capsule

MEMS

Polar Pattern

Cardioid

Frequency Response

40 Hz to 20 kHz

Sensitivity

MTQG	-42 dBV/Pa [1]
LEMO	-37 dBV/Pa [1]

Self-Noise, A-Weighted, Equivalent Acoustical

MTQG	32 dB SPL-A
LEMO	32 dB SPL-A

Signal-To-Noise Ratio [2]

MTQG	62 dB-A
LEMO	62 dB-A

Maximum SPL [3]

130 dB SPL, 1 kHz at 1% THD, typical

Dynamic Range

98 dB typical

Microphone Current Draw

530 μ A, maximum

Bias Voltage

Recommended Operating Voltage

3.5-5 V DC minimum, 5.5 V DC maximum

Housing

Molded ABS

Polarity

MTQG	Positive pressure on diaphragm produces positive voltage on pin 3 with respect to pin 1
LEMO	Positive pressure on diaphragm produces positive voltage on pin 3 with respect to pin 1

Cable Diameter

1.6 mm

Cable Length

66 in. (1.67 m)

Net Weight

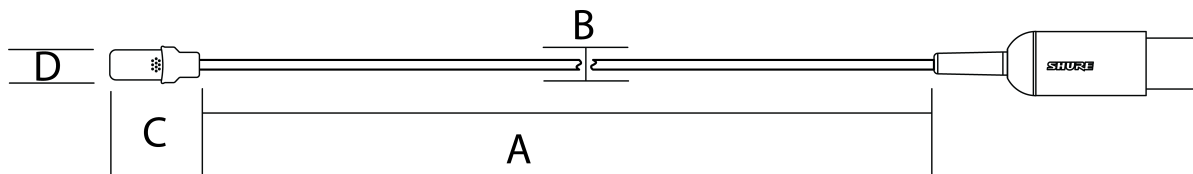
12.5 g (0.44 oz.)

[1] 1 Pa=94 dB SPL

[2] S/N ratio is the difference between 94 dB SPL and equivalent SPL of self noise, A-weighted

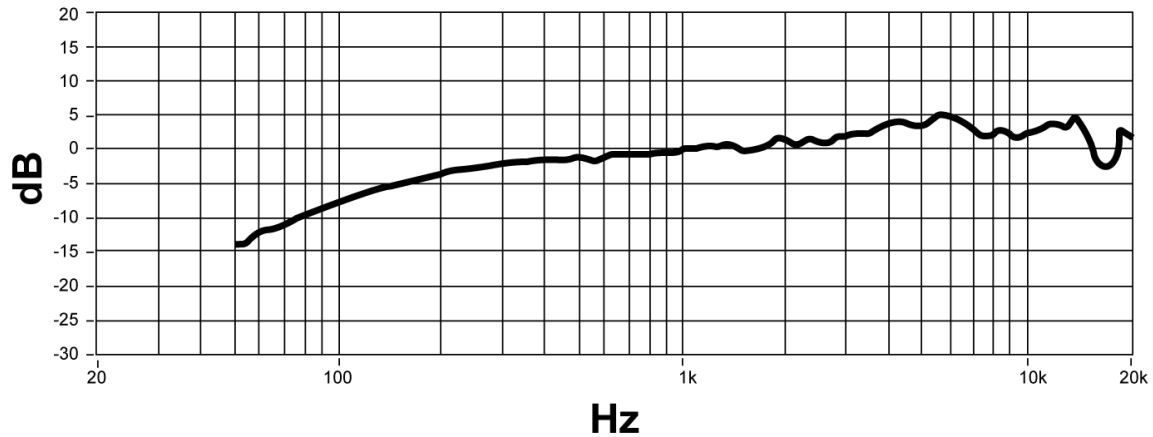
[3] THD of microphone preamplifier when applied input signal level is equivalent to cartridge output at specified SPL

Dimensions

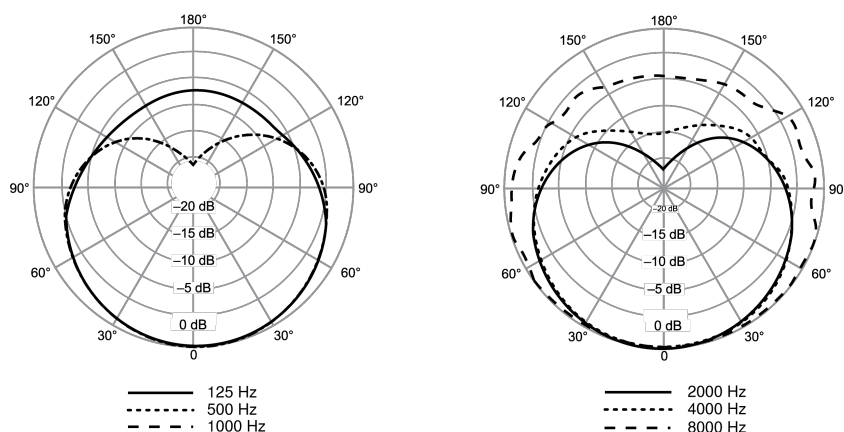


	A	B	C	D
	Cable Length	Cable Diameter	Microphone Length	Microphone Diameter
UL4	66 in. (1.67 m)	1.6 mm	17 mm	5 mm

Frequency Response



Polar Pattern



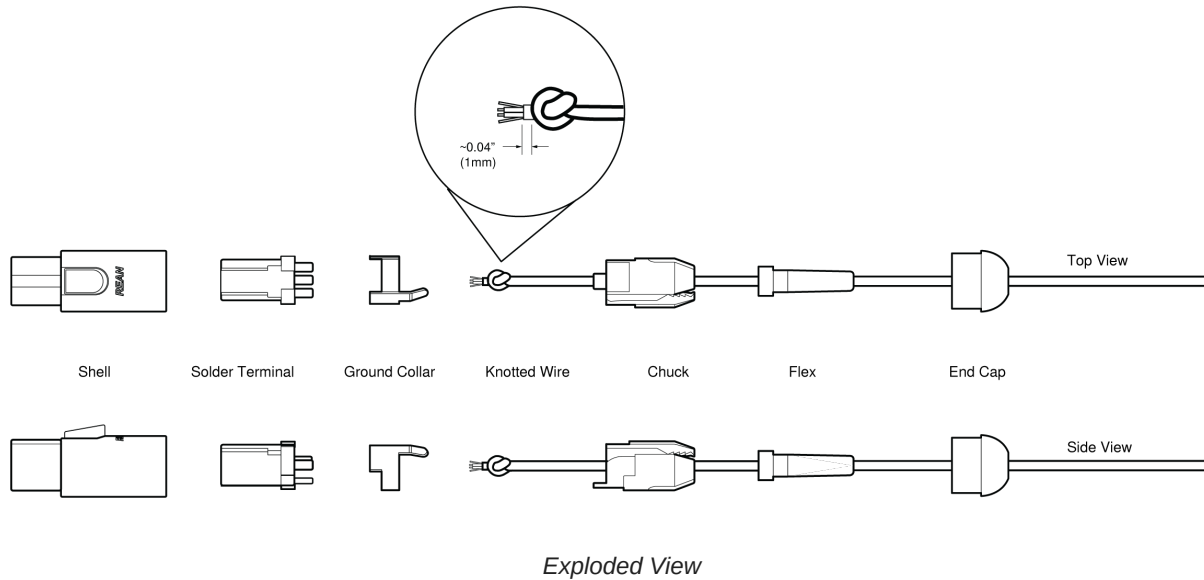
Wiring and Termination

Typical Wiring Table

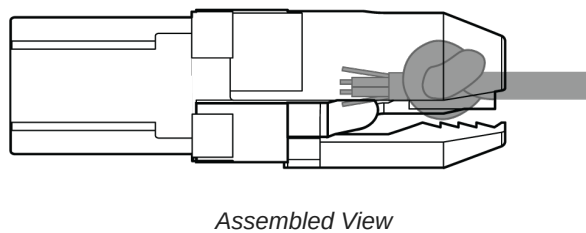
Series	Cable Construction	Electrical Design	Polarity	Replacement Connector	For Use With	Wiring	Line Art (From Solder Side)
UL4-MTQG	1.6 mm cable with 2 conductors, 2 shield wires and shield	3-Wire (Source Follower)	Positive with respect to ground	WA430	All Shure TA4F Bodypacks	Red wire: Bias (2) Blue wire: Audio (3) Shield wire: Ground (1) Shield: Ground (Shell)	
UL4-LEMO	1.6 mm cable with 2 conductors, 2 shield wires	2-Wire (Common Source)	Negative with respect to ground	WA416	Shure Lemo bodypacks (ADX1-Lemo, Shure UR1M-Lemo, ULXD1-Lemo)	Red wire: Audio/Bias (3) Blue wire: Bias (2) Shield wire: Ground (1)	

Series	Cable Construction	Electrical Design	Polarity	Replacement Connector	For Use With	Wiring	Line Art (From Solder Side)
	and shield						

MTQG Connector Assembly



Note: Make sure to solder the shield to ground collar.



Certifications

Note: Testing is based on the use of supplied and recommended cable types. The use of other than shielded (screened) cable types may degrade EMC performance.

The CE Declaration of Conformity can be obtained from: www.shure.com/europe/compliance

Authorized European representative:

Shure Europe GmbH

Global Compliance

Jakob-Dieffenbacher-Str. 12

75031 Eppingen, Germany
Phone: +49-7262-92 49 0
Email: info@shure.de
www.shure.com