



BT1

Shure Bluetooth® Earphones

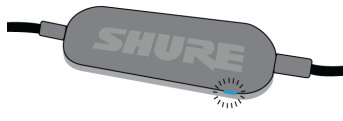
The Shure Bluetooth earphones quick start guide.
Version: 1.2 (2022-A)

Table of Contents

BT1 Shure Bluetooth® Earphones	3	Charging the Earphones	4
Bluetooth Pairing	3	Specifications	5
The best sound starts with a good fit	3	Bluetooth Specifications	5
To keep them sounding their best...	3	Safety Information	6
Changing Sleeves	4	WARNING	6
Using the Remote	4	Information to the user	6
The Center Button	4	Certifications	9
Up and Down Buttons	4		

BT1 Shure Bluetooth® Earphones

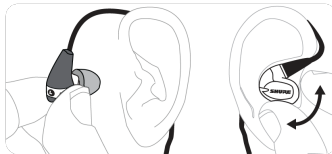
Bluetooth Pairing



1. Turn off the earphones. Press and hold center button on earphone remote until the LED flashes blue and red.
2. From your audio source, select "Shure BT1."
3. LED turns blue when successfully paired.

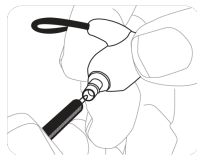
For additional pairing options, please visit <https://www.shure.com/earphones>.

The best sound starts with a good fit



- Select the sleeve that provides a snug fit (like earplugs).
- Secure the cable behind the ear to maintain a tight seal.

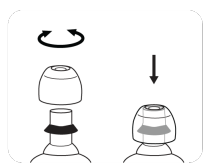
To keep them sounding their best...



- Clean regularly to remove debris and deposits.
- Contact Shure Service and Repair to replace damaged product.

Note: Certain models of Shure earphones feature a detachable cable with MMCX connection for easy replacement. Simply detach and return to Shure Service and Repair.

Changing Sleeves



- Gently twist and pull to remove sleeve.
- Install the new sleeve so it completely covers the barb and nozzle.

Visit <http://www.shure.com/earphones> for replacement parts and important instructions on cleaning and maintenance.

Using the Remote

The Center Button

Power on	Press and hold
Power off	Press and hold, 5 seconds
Pair Bluetooth	Turn off the earphones. Press and hold, 7 seconds
Play/Pause	Click once
Answer/End a call	Click once
Decline a call	Press and hold, 3 seconds
Activate voice assistant	Phone on, press and hold, 3 seconds
Factory Reset	Turn off the earphones and plug into a charger. Press and hold, 15 seconds. Hold past pairing mode until earphones turn off again.

Up and Down Buttons

Volume Up/Down	Click + or -
Next track	Press and hold +, 3 seconds
Previous track	Press and hold -, 3 seconds
Check battery status	Press and hold + and - together, 3 seconds

Your phone may not be compatible with some functions. Visit <http://www.shure.com/earphones> for more information.

Charging the Earphones



Red LED indicates low battery.

1. Connect earphones to charging device using supplied cable.
2. LED is red while charging.
3. When earphones are charged, LED turns off.

Warning: Before charging, make sure the product is at room temperature, between 0 to 45°C (32 to 113°F).

Note: Use this product only with an agency approved power supply which meets local regulatory requirements (e.g., UL, CSA, VDE, CCC, INMETRO).

Specifications

Bluetooth Specifications

Antenna Information

- Type = Chip
- Gain = +2.13 dBi

Bluetooth 4.1

- Operating frequency = 2402MHz-2480MHz
- Modulation scheme = FHSS
- RF power = +5.38dBm (E.I.R.P.)

Battery Type

RMCE-BT1	Rechargeable Li-Ion
RMCE-BT2	Rechargeable Li-Ion

Nominal Voltage

RMCE-BT1	3.7 V DC
RMCE-BT2	3.7 V DC

Battery Life

RMCE-BT1	up to 8 hours
RMCE-BT2	up to 10 hours

Total Battery Life

RMCE-BT1	120 mAh
RMCE-BT2	200 mAh

Charging Requirements

USB Source

RMCE-BT1	5 V DC, 100 mA, minimum
RMCE-BT2	5 V DC, 100 mA, minimum

Charging Time

RMCE-BT1	2 hours
RMCE-BT2	2 hours

Quick Charge

RMCE-BT1	Up to 1.5 hours of play time with 15 minutes of charge time
RMCE-BT2	Up to 1.5 hours of play time with 15 minutes of charge time

Battery Charging Temperature Range

RMCE-BT1	0 to 45 °C (32 to 113 °F)
RMCE-BT2	0 to 45 °C (32 to 113 °F)

Safety Information

Visit <http://www.shure.com/earphones> for the latest regulatory and compliance information.



- Follow instructions from manufacturer.
- Product battery may explode or release toxic materials. Risk of fire or burns. Do not open, crush, modify, disassemble, heat above 140°F (60°C), or incinerate.
- Attention should be drawn to the environmental aspects of battery disposal.
- Product shall not be exposed to excessive heat such as sunshine, fire, or the like.
- Do NOT make unauthorized alterations to this product.

Note: Battery replacement to be performed only by Shure authorized service personnel.

CAUTION: Follow applicable laws regarding mobile phone and headphone use while driving.

This product contains magnetic material. Consult your physician on whether this might affect your implantable medical device.

Information to the user

This device complies with part 15 of the FCC Rules. Operation is subject to the following two conditions:

1. This device may not cause harmful interference.

2. This device must accept any interference received, including interference that may cause undesired operation.

Note: This equipment has been tested and found to comply with the limits for a Class B digital device, pursuant to part 15 of the FCC Rules. These limits are designed to provide reasonable protection against harmful interference in a residential installation. This equipment generates uses and can radiate radio frequency energy and, if not installed and used in accordance with the instructions, may cause harmful interference to radio communications. However, there is no guarantee that interference will not occur in a particular installation. If this equipment does cause harmful interference to radio or television reception, which can be determined by turning the equipment off and on, the user is encouraged to try to correct the interference by one or more of the following measures:

- Reorient or relocate the receiving antenna.
- Increase the separation between the equipment and the receiver.
- Connect the equipment to an outlet on a circuit different from that to which the receiver is connected.
- Consult the dealer or an experienced radio/TV technician for help.

This device complies with FCC Part 15.

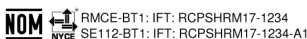
Changes or modifications not expressly approved by the party responsible for compliance could void the user's authority to operate the equipment.

This Class B digital apparatus complies with Canadian ICES-003. Cet appareil numérique de la classe B est conforme à la norme NMB-003 du Canada.

Note: Testing is based on the use of supplied and recommended cable types. The use of other than shielded (screened) cable types may degrade EMC performance.

Este equipo ha sido diseñado para operar con las antenas que enseguida se enlistan y para una ganancia máxima de antena de [+2.13] dBi. El uso con este equipo de antenas no incluidas en esta lista o que tengan una ganancia mayor que [+2.13] dBi quedan prohibidas. La impedancia requerida de la antena es de [50] ohms.

La operación de este equipo está sujeta a las siguientes dos condiciones: (1) es posible que este equipo o dispositivo no cause interferencia perjudicial y (2) este equipo o dispositivo debe aceptar cualquier interferencia, incluyendo la que pueda causar su operación no deseada.



1. 經審驗合格之射頻電信終端設備，非經許可，公司、商號或使用者均不得擅自變更頻率、加大功率或變更原設計之特性及功能。
2. 射頻電信終端設備之使用不得影響飛航安全及干擾合法通信；經發現有干擾現象時，應立即停用，並改善至無干擾時方得繼續使用。所謂合法通信，係指依電信法規定作業之無線電信。
3. 輸入、製造射頻電信終端設備之公司、商號或其使用者違反本辦法規定，擅自使用或變更無線電頻率、電功率者，除依電信法規定處罰外，國家通訊傳播委員會並得撤銷其審驗合格證明。
4. 減少電磁波影響，請妥適使用

低功率射頻器材技術規範

取得審驗證明之低功率射頻器材，非經核准，公司、商號或使用者均不得擅自變更頻率、加大功率或變更原設計之特性及功能。低功率射頻器材之使用不得影響飛航安全及干擾合法通信；經發現有干擾現象時，應立即停用，並改善至無干擾時方得繼續使用。前述合法通信，指依電信管理法規定作業之無線電通信。低功率射頻器材須忍受合法通信或工業、科學及醫療用電波輻射性電機設備之干擾。

運用に際しての注意

この機器の使用周波数帯では、電子レンジ等の産業・科学・医療用機器のほか工場の製造ライン等で使用されている移動体識別用の構内無線局（免許を要する無線局）及び特定小電力無線局（免許を要しない無線局）並びにアマチュア無線局（免許を要する無線局）が運用されています。

1. この機器を使用する前に、近くで移動体識別用の構内無線局及び特定小電力無線局並びにアマチュア無線局が運用されていないことを確認して下さい。
2. 万一、この機器から移動体識別用の構内無線局に対して有害な電波干渉の事例が発生した場合には、速やかに使用周波数を変更するか又は電波の発射を停止した上、下記連絡先にご連絡頂き、混信回避のための処置等（例えば、パーティションの設置など）についてご相談して下さい。
3. その他、この機器から移動体識別用の特定小電力無線局あるいはアマチュア無線局に対して有害な電波干渉の事例が発生した場合など何かお困りのことが起きたときは、保証書に記載の販売代理店または購入店へお問い合わせください。代理店および販売店情報は Shure 日本語ウェブサイト <http://www.shure.co.jp> でもご覧いただけます。

現品表示記号について

2.4FH1

現品表示記号は、以下のことを表しています。この無線機器は 2.4GHz 帯の電波を使用し、変調方式は「FH-SS」方式、想定干渉距離は 10m です。2,400MHz~2,483.5MHz の全帯域を使用し、移動体識別装置の帯域を回避することはできません。

日本の電波法および電気通信事業法準拠。本デバイスは日本の電波法および電気通信事業法に基づく認証を受けています。本デバイスを改造しないでください（改造すると認証番号は無効になります）。



Este equipamento não tem direito à proteção contra interferência prejudicial e não pode causar interferência em sistemas devidamente autorizados.



MSIP-CRM-SHU-RMCE-BT1

상호명: Shure Incorporated
 기재제의 명칭: 무선데이터통신 시스템용 무선기기
 모델명: SE112-BT1, RMCE-BT1
 제조업체명/제조국명: Shure Incorporated / China
 정격: 5Vdc, 0.5mA
 시비스센터: 삼아프로사운드 Tel: 02-734-0653
 제품 무선기기는 전파혼신 가능성이 있으므로 인명 안전과 관련된 서비스는 할 수 없습니다.
 안전확인 신고번호
 Battery safety certificate number: XU100702-16005A
 제품명 Product name (model name): 전지 (401230)
 정격 Rating: 3.7 Vdc, 110 mA
 제조업체명/제조국명
 Battery Manufacturer/Country of Origin:
 Dongguan Golden CEL Battery Co., Ltd / China
 A/S 연락처
 Service Center contact information:
 삼아프로사운드 Tel: 02-734-0653

TRA REGISTERED No: ER56780/17

DEALER No: 67442/17

адаптеры Secure Fit

производитель: SHURE

модель RMCE-TW1

Декларант: Общество с ограниченной ответственностью «Шур Ар-И-И»

Юридический адрес: 119049, Москва, 4-ый Добрынинский пер., д.8, офис 114.

Фактический адрес: 119049, Москва, 4-ый Добрынинский пер., д.8, помещение 114, офис R01-211

Телефон: +7(985)433-72-53

Факс:

E-mail: Oernfelt_Angelika@shure.com

ОГРН: 1147746623573

зарегистрировано: 03 июня 2014

в лице: Генерального директора

ФИО: Эрнфельт Ангелика

Напряжение питания:

Зарядный кейс: Input: 5V==0.26A

Наушники: Input: 5.1V==0.042A

Диапазон частот: 2402 MHz – 2480 MHz

Вес: 20.8 g

Сделано в Китае

Дата изготовления указана на продукте

ERC



The Bluetooth word mark and logos are registered trademarks owned by the Bluetooth SIG, Inc. and any use of such marks by Shure Incorporated is under license. Other trademarks and trade names are those of their respective owners.

Environmentally friendly disposal



Old electrical appliances must not be disposed of together with the residual waste, but have to be disposed of separately. The disposal at the communal collecting point via private persons is for free. The owner of old appliances is responsible to bring the appliances to these collecting points or to similar collection points. With this little personal effort, you contribute to recycle valuable raw materials and the treatment of toxic substances.

Paraguay Distributor: Microsystems S.R.L., Senador Long 664 c/Dr. Lilio, Asunción, Paraguay

Certifications

This product meets the Essential Requirements of all relevant European directives and is eligible for CE marking.

CE Notice: Hereby, Shure Incorporated declares that this product with CE Marking has been determined to be in compliance with European Union requirements. The full text of the EU declaration of conformity is available at the following site: <https://www.shure.com/en-EU/support/declarations-of-conformity>.

Authorized European representative:

Shure Europe GmbH

Department: Global Compliance

Jakob-Dieffenbacher-Str. 12

75031 Eppingen, Germany

Phone: +49-7262-92 49 0
Fax: +49-7262-92 49 11 4
Email: EMEAsupport@shure.de